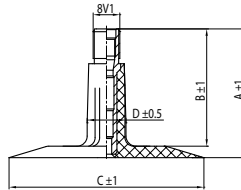


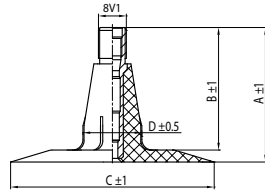
# VALVES

TR-13



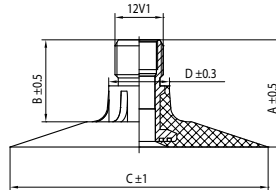
Valve no.	A (mm)	B (mm)	C dia (mm)	D dia (mm)
TR-13	37	33.5	56	11.2

TR-15



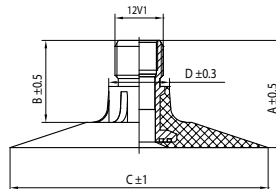
Valve no.	A (mm)	B (mm)	C dia (mm)	D dia (mm)
TR-15	37	33.5	56	16.2

TR-218

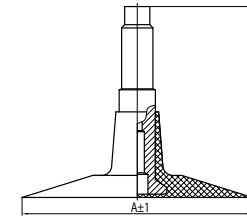


Valve no.	A (mm)	B (mm)	C dia (mm)	D dia (mm)
TR-218A	27	20.65	64	15.9

TR-220

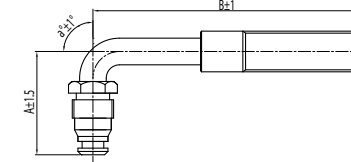


Valve no.	A (mm)	B (mm)	C dia (mm)	D dia (mm)
TR-220A	36	29.65	64	15.9



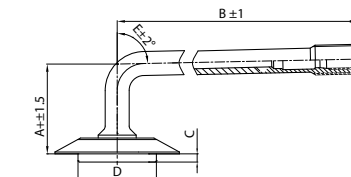
Valve no.	A (mm)	B (mm)
TR300	70	58

TR-300



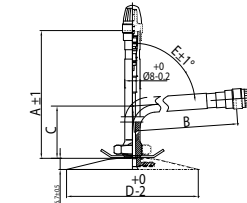
Valve no.	A (mm)	B (mm)	a°
TRJ4000-6	31	139.7	90

TRJ-4000



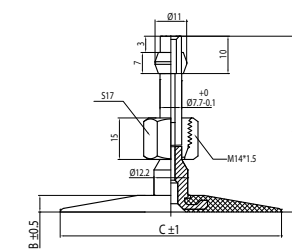
Valve no.	A (mm)	B (mm)	C dia	D dia	E°
TRJ1175C	35	105	4	32	88

TRJ1175C



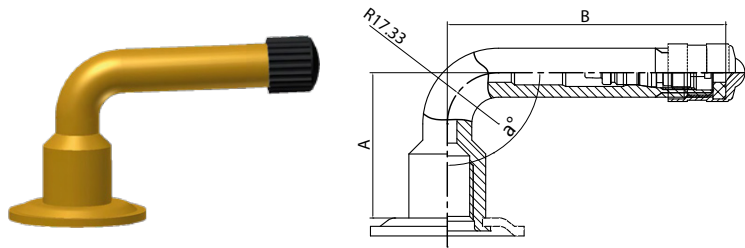
Valve no.	A (mm)	B (mm)	C (mm)	D dia	E°
TR75A	95	76	24	82	86
TR78A	146	127	24	82	86
TR177A	114	95	24	82	86
TR179A	160	141	24	82	86

TR75A\*



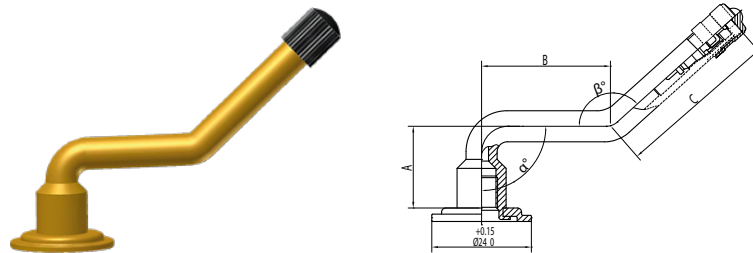
PK-5A-145

V3.02...



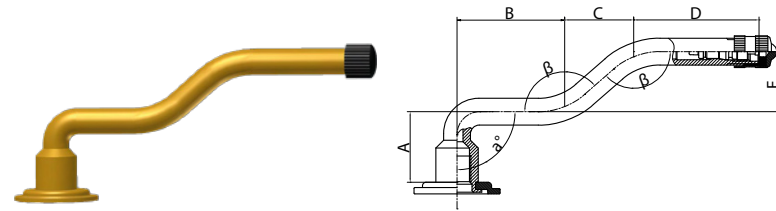
Valve no.	A (mm)	B (mm)	α°
V3.02.1	25.5	41.5	120°
V3.02.2	22.5	43	120°
V3.02.3	33	44.5	95°
V3.02.4	39.5	44.5	110°
V3.02.5	20.5	47.5	90°
V3.02.6	23.5	60.5	110°
V3.02.7	22.5	71.5	100°
V3.02.8	20.5	89.5	94°
V3.02.9	20.5	99.5	94°
V3.02.10	20.5	115	94°
V3.02.11	20	126	98°
V3.02.12	20.5	132	94°
V3.02.13	20.5	133.5	90°
V3.02.14	20.5	138.5	94°
V3.02.15	20.5	145.5	94°
V3.02.16	20.5	149.5	90°
V3.02.17	20.5	156.5	90°
V3.02.18	22.5	74.5	90°
V3.02.19	20.5	60	94°
V3.02.20	22.5	56.5	95°
V3.02.21	20.5	172	90°
V3.02.23	29.5	66.5	90°
V3.02.24	20.5	117	90°
V3.02.26	20.5	105	94°
V3.02.27	20	75	94°
V3.02.29	20	127	94°

V3.04...



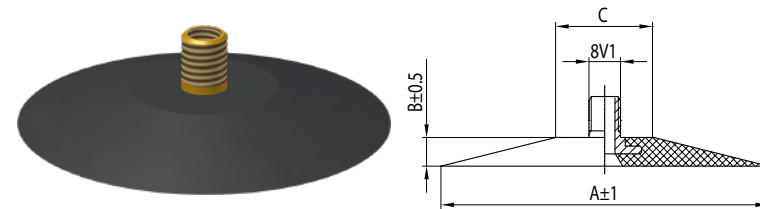
Valve no.	A (mm)	B (mm)	C (mm)	α°	β°
V3.04.1	20.5	32	37	90°	138°
V3.04.2	20.5	38	41.5	90°	153°
V3.04.3	20	59	38.5	94°	163°
V3.04.4	20	74	40	94°	144°
V3.04.5	20	76	47.5	90°	153°
V3.04.6	20	86	47.5	90°	153°
V3.04.7	20.5	30.5	38	90°	154°
V3.04.8	20.5	36.5	43	90°	167°
V3.04.10	20.5	47	53	90°	154°
V3.04.11	20.5	47	63.5	90°	154°
V3.04.12	20.5	60.5	60.5	90°	159°
V3.04.14	20.5	83.5	65	90°	159°
V3.04.15	20.5	42	38.5	90°	120°
V3.04.17	20	65	45	90°	160°
V3.04.18	20	72	45	90°	160°
V3.04.20	20	68	47	94°	164°
V3.04.21	20	83	57	94°	154°
V3.04.22	20	28	47	94°	164°
V3.04.23	20	48	47	94°	164°
V3.04.24	20	58	47	94°	164°
V3.04.25	20	80	47	94°	164°
V3.04.26	20	99	42	99°	189°

V3.06...



Valve no.	A (mm)	B (mm)	C (mm)	D (mm)	E (mm)	α°	β°
V3.06.1	20.5	30.5	19.5	35.5	17	90°	139°
V3.06.2	20.5	44.5	12	37.5	17	90°	125°
V3.06.3	20.5	46	20.5	47.5	17	90°	139°
V3.06.4	32.5	46.5	20.5	46.5	17	95°	140°
V3.06.5	20.5	62.5	19.5	49	17	90°	139°
V3.06.6	20	79.5	19.5	37.5	17	90°	139°
V3.06.7	20.5	45.5	18.5	42.5	17	90°	137°
V3.06.8	24.5	61.5	14.5	50.5	7.5	94°	153°
V3.06.9	20.5	67.5	19.5	54.5	17	90°	139°
V3.06.12	23.5	71.5	19.5	25.5	11.5	90°	150°
V3.06.13	20	40	13	40	7	94°	153°
V3.06.14	20	50	13	40	7	94°	153°
V3.06.15	20	60	13	40	7	94°	153°
V3.06.16	20	62	13	50	7	94°	153°
V3.06.17	20	75	13	50	7	94°	153°
V3.06.18	20	82	30	35	10	94°	153°

V3.08...



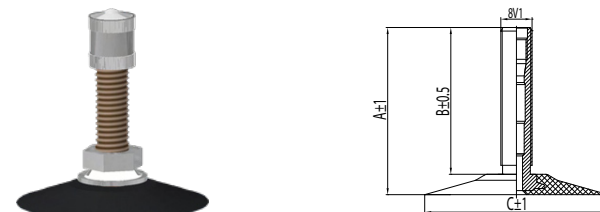
Valve no.	A (mm)	B (mm)	C dia
V3.08.1	65	7	26
V3.08.2	70	7	26
V3.08.3	80	8	26
V3.08.4	57	5	26

SP-5  
(TR-11)  
(V521)



Valve no.	A (mm)	B (mm)	C dia
SP-5	40	34.8	57

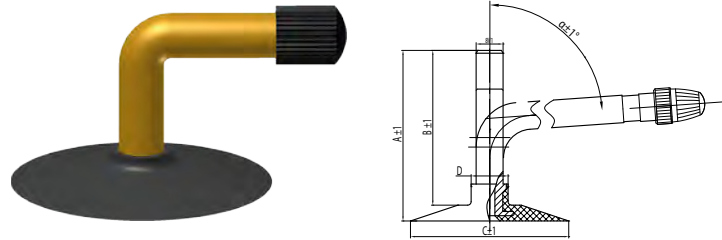
GP-4  
(TR-4)  
(V1.09.1)



Valve no.	A (mm)	B (mm)	C dia
GP-4	34.5	29.5	45

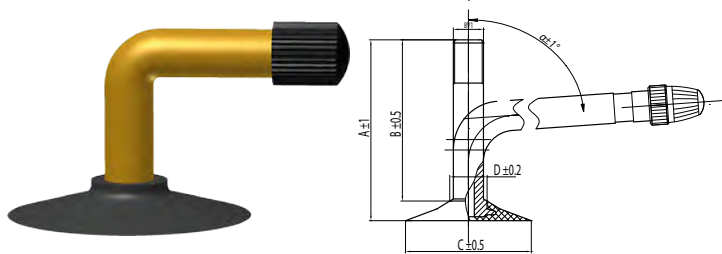
# » VALVES

**TR87**



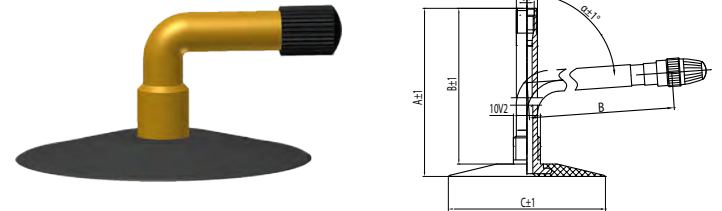
Valve no.	A (mm)	B (mm)	C dia	D dia	α°
TR87	48	43,5	45	10,5	90

**TR87A**



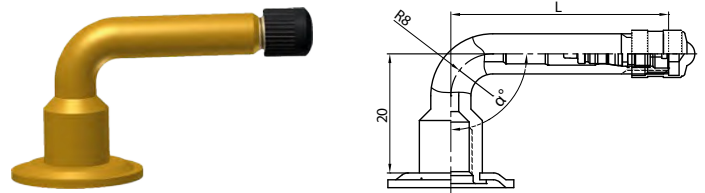
Valve no.	A (mm)	B (mm)	C dia	D dia	α°
TR87A	46	41	32	9,5	90

**JS2**



Valve no.	A (mm)	B (mm)	C dia	α°
JS2	61	56,5	57	90

**GW 4B  
50x60°**



Valve no.	L	α°
GW 4B 50X60°	60	50°